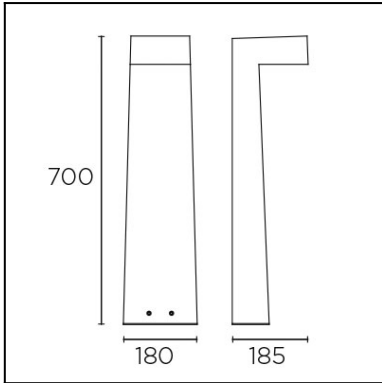
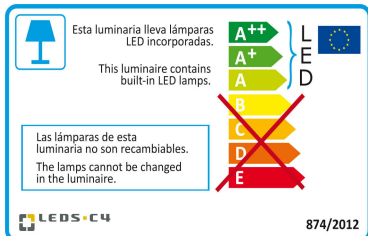




The photograph may not match the reference exactly. Please read the product description to identify the finish.



Download photometric file .ldt /.ies



Click on image to download energy label

TECHNICAL CHARACTERISTICS

Type:	Beacon
IP Protection degrees:	IP65
Light source 1:	20 x LED
Bulb specified at the product label	9W Warm White - 3000K 1261 lm ^(N) CRI 80
Voltage / Frequency:	100-240VAC/50-60Hz
Warranty:	2
Option to extend the guarantee:	5
Units per box:	1
Net Weight (Kg):	18.565
EAN Code:	8435381463441



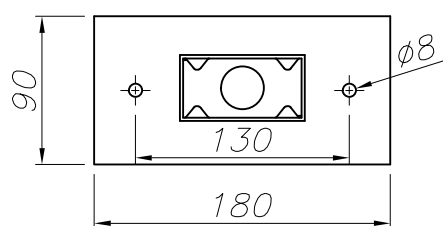
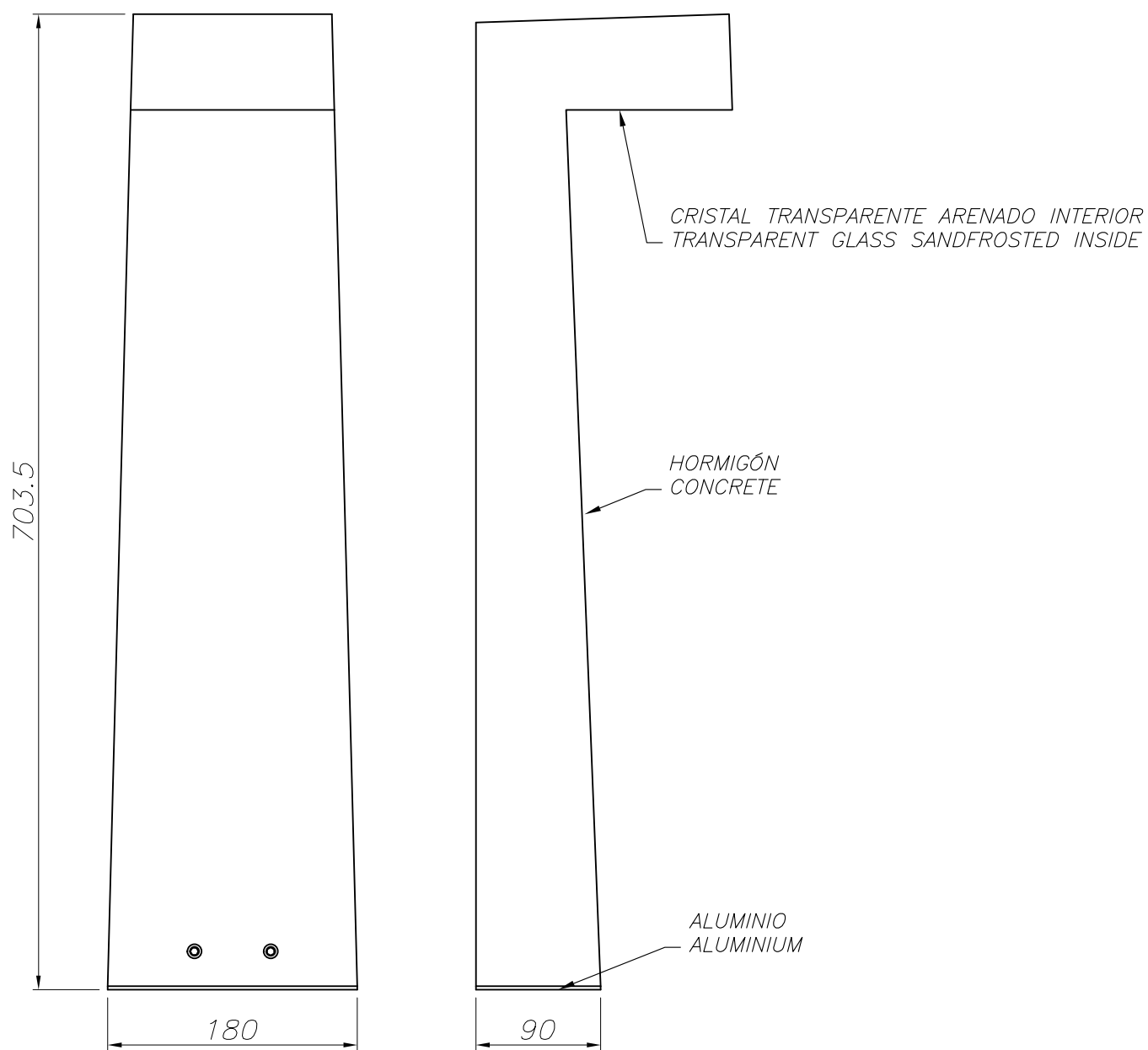
MATERIALS / FINISHES

Structure material: cement
Structure finish: cement

Diffuser material: Glass
Diffuser finish: Sandblasted

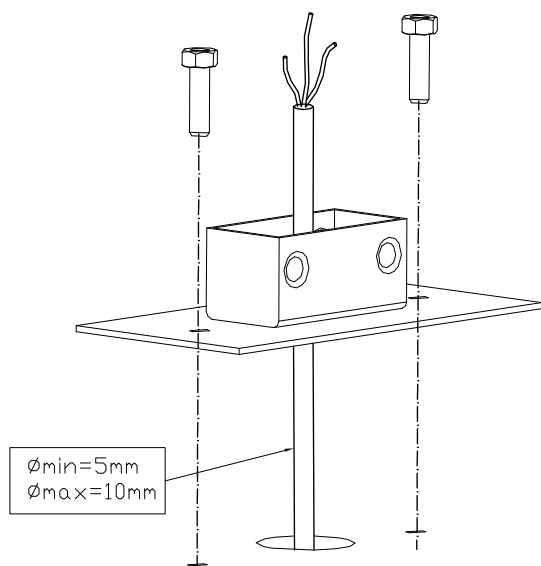
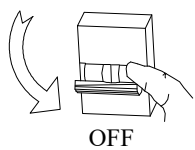
GEAR

Multi-voltage electronic gear included (Yes)

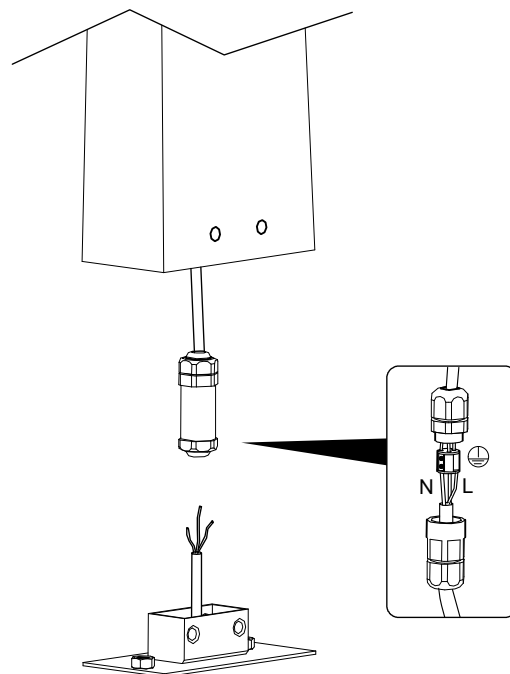


PLANTILLA DE INSTALACIÓN
INSTALLATION TEMPLATE

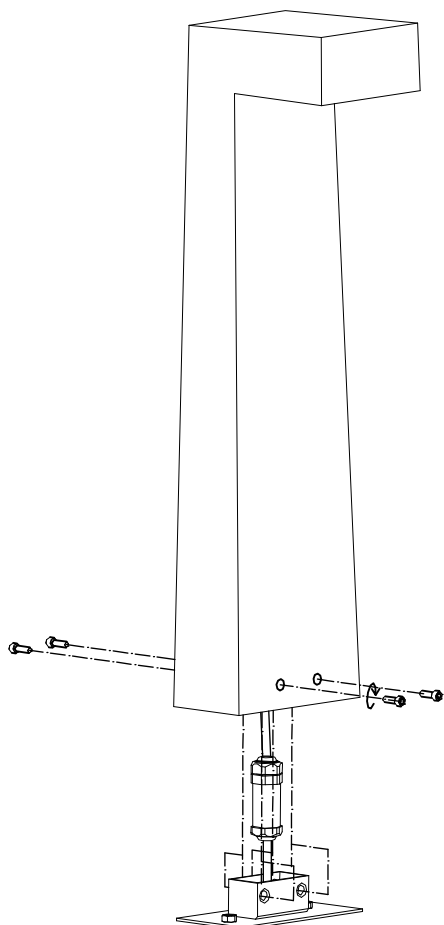
①



②



③



④

